


CAROLINA CROSSROADS NOISE INFORMATION



How Does SCDOT Evaluate Traffic Noise?

01

First, SCDOT experts go to homes, churches, businesses, etc. that may be affected by a proposed highway project and use special equipment to monitor existing noise.

02

Next, using complex computer modeling, we predict expected noise changes at these locations once the road is built and traffic increases.

03

Then, we must determine which noise-sensitive locations were permitted before the Date of Public Knowledge and, therefore, are eligible for noise reduction.

04

If the anticipated noise increase is MORE than the level defined by SCDOT policy and FHWA's Noise Abatement Criteria (23 CFR Part 772), we begin to consider possible ways to reduce the noise, such as with noise walls and earth berms, at all eligible locations.



When Are Noise Walls Considered?



Whenever a highway project uses federal funds and meets the FHWA's criteria of a Type I project, the potential for increased traffic noise—and how to reduce it—must be evaluated. For all Type I projects where traffic noise impacts are predicted, noise abatement (typically in the form of noise walls) must be considered.

Carolina Crossroads Noise Study



Detailed noise analysis study area and noise abatement (noise walls) considered for the Carolina Crossroads project

A total of 2,772 individual noise receptor sites were identified. Sites were within approximately 500 feet of the project centerline and were identified using parcel map information. 26 noise wall locations were evaluated in the Environmental Impact Statement and presented at a public hearing; three noise walls were determined to be reasonable and feasible.

Refined Recommended Preferred Alternative Noise Impacts and Potential Barriers

Legend

— Refined Recommended Preferred Alternative

▭ Noise Study Area

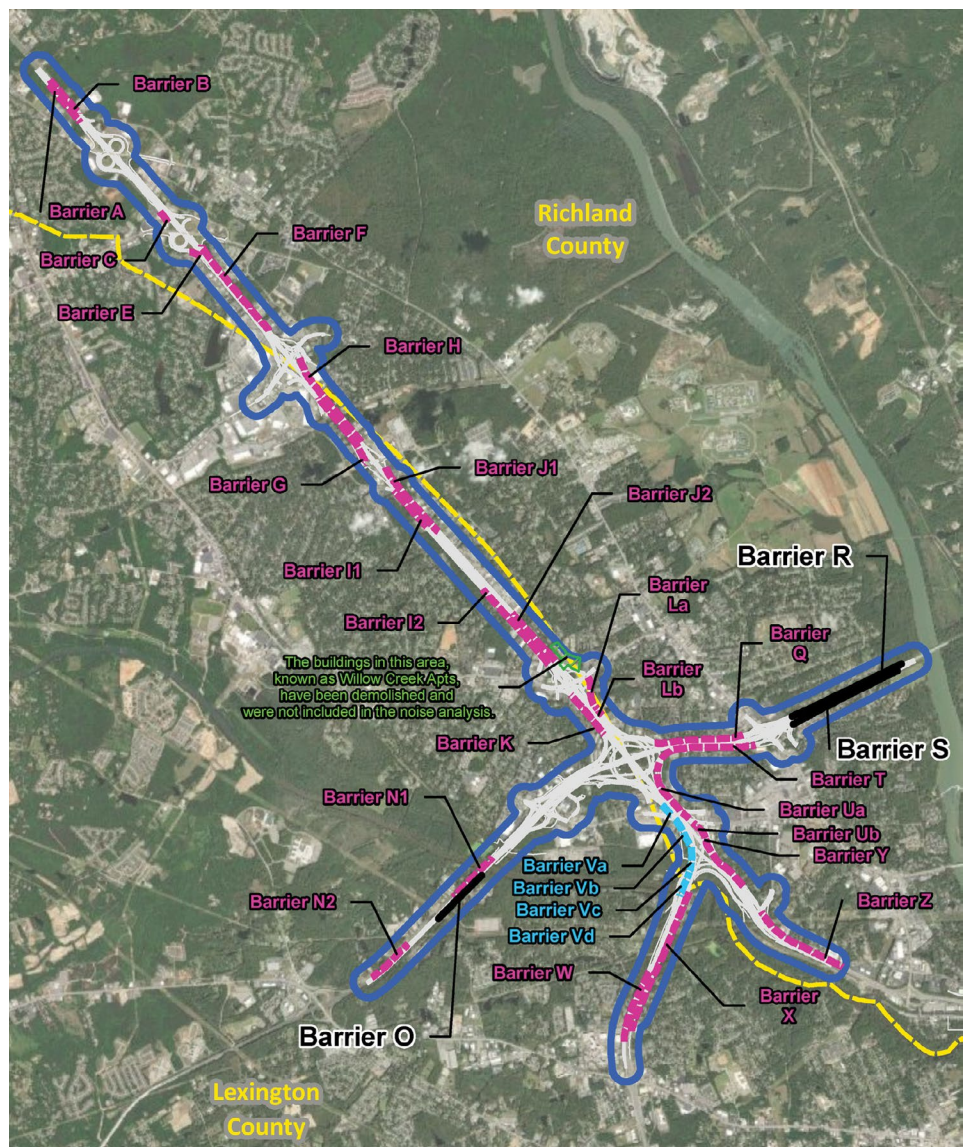
▭ County Boundaries

Noise Barrier Locations:

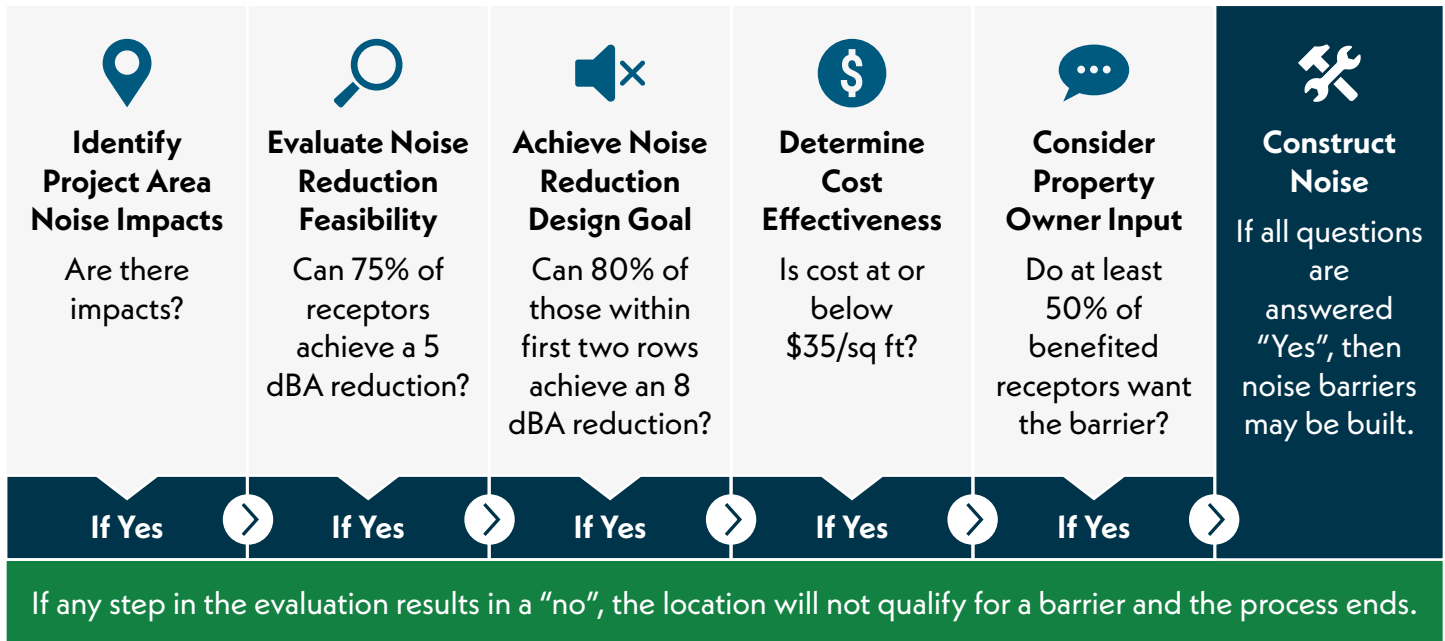
▬ Feasible and Reasonable

▬ Feasible Not Reasonable

▬ Not Feasible



SCDOT Noise Abatement Evaluation Process



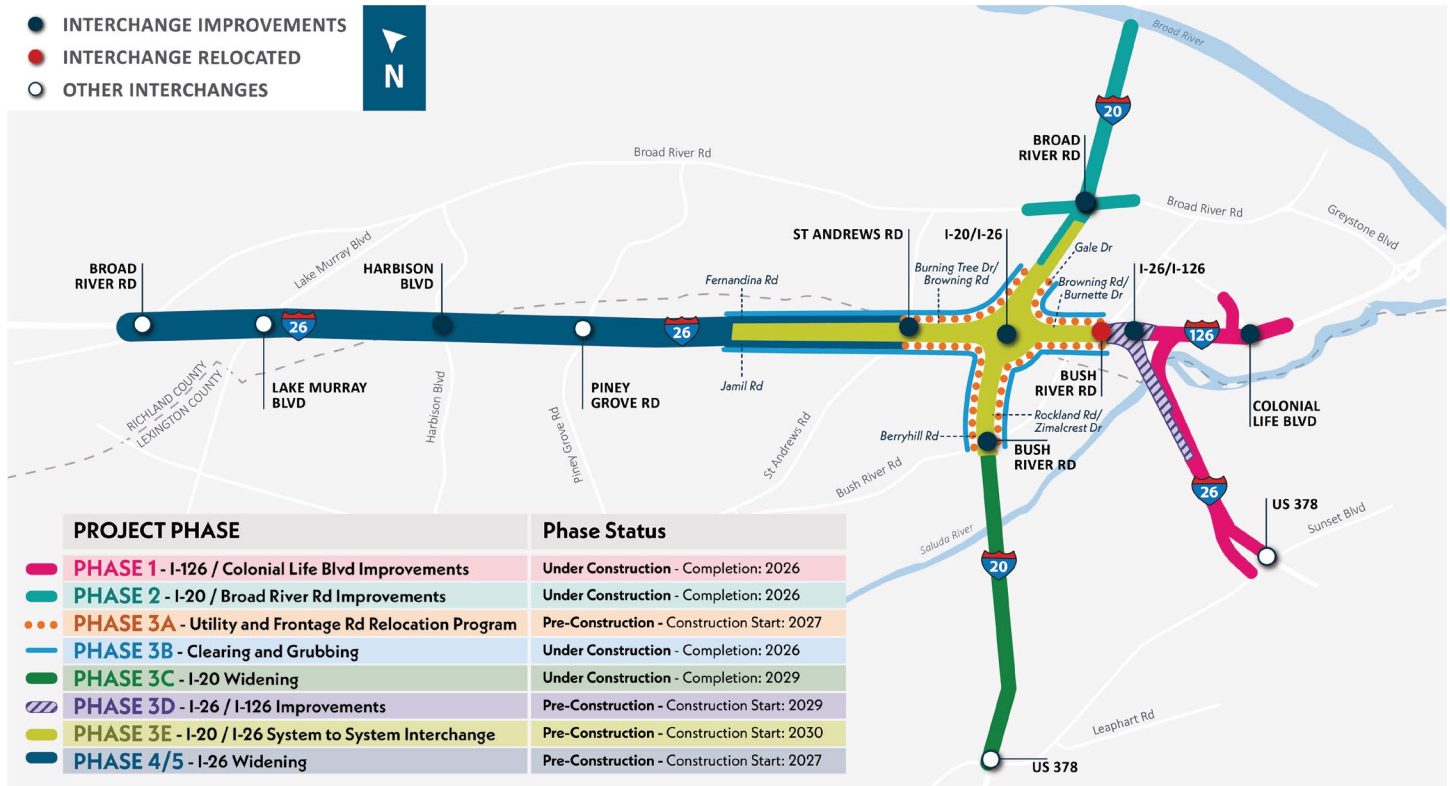
Resources and Reading

There are a wide variety of resources available to learn about the FHWA noise policy and SCDOT's noise abatement policy and process. Please refer to the resources below for more.

- Carolina Crossroads Final Environmental Impact Statement (FEIS) Appendix J - Noise Technical Report**
www.scdotcarolinacrossroads.com/FEIS-documents/App_J_Noise_Technical_Report_Part_1.pdf
- SCDOT Traffic Noise Abatement Policy**
www.scdotcarolinacrossroads.com/FEIS-documents/App_J_Noise_Technical_Report_Part_3.pdf
- Federal Highway Administration (FHWA) 23 CFR Part 772 Procedures for Abatement of Highway Traffic Noise and Construction Noise**
www.gpo.gov/fdsys/pkg/FR-2010-07-13/pdf/2010-15848.pdf
- SCDOT Noise Abatement Process Video**
Use the QR code to watch a video and learn more about SCDOT's noise abatement process



About the Carolina Crossroads Project



The Carolina Crossroads project is approximately \$2.7 billion state infrastructure project that is part of South Carolina Department of Transportation's (SCDOT) 10-Year Plan.

The project is one of the largest construction venture in South Carolina transportation history and is a testament to the state's commitment to provide a safer, more modern interchange design for the I-20/I-26/I-126 corridor.

The upgrade and modernization of the corridor is critical to the state's economic vitality and will enhance the daily commute for thousands of South Carolinians. More than 134,000 vehicles travel through this area on a daily basis. After construction, the average commuter through the corridor will save 112 hours each year.

Project Benefits

- ▶ **Reduces Traffic Congestion**
 The Carolina Crossroads Project will help reduce congestion and help the traveling public save an estimated 112 hours annually that would otherwise be spent sitting in traffic.
- ▶ **Modernizes Outdated Infrastructure**
 The updated infrastructure will replace cloverleaf loops with a modern interchange, add traffic lanes on I-26 for more vehicles, and create longer separate exits.
- ▶ **Improves Safety**
 The Carolina Crossroads Project will increase safety for the driving public by eliminating multiple weaving movements at and near the I-20/I-26 interchange and reducing long periods of congestion that lead to higher crash rates.
- ▶ **Accommodates Growth**
 The Midlands region's population is projected to grow an average of 70% by 2040. This project will accommodate growth, directly and indirectly create over 1,300 jobs in the region throughout the duration of construction.