



Carolina Crossroads Quarterly

Spring 2024

Important Information about Phase 3 Program Re-phasing



Carolina Crossroads project engineer shares Phase 1 updates with residents.

On April 9, SCDOT hosted a public meeting at Dutch Square Center to share information about the construction re-phasing of the Carolina Crossroads Project and provide overall project updates. This meeting was an opportunity for the public to learn more about the changes and the impact on the community. In case you missed it, here is a recap.

Background

In October 2023, SCDOT announced that the Carolina Crossroads Project would be restructured to improve project delivery and accelerate the widening of I-20 in the Midlands.

Last February, SCDOT announced that the upcoming phases of construction will advance the interstate widening projects on I-20 and the improvements to the I-126 and I-26 interchange while utility coordination and project development continue in the main interchange area.

Updated Phasing

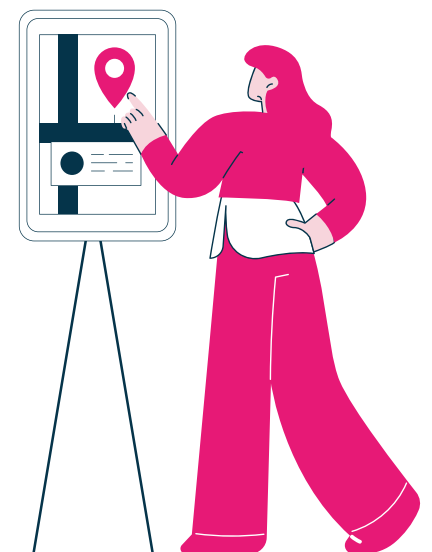
Phase 3 now consists of five subphases, A, B, C, D, E. Each subphase indicates a key task expected to be completed.

- | | |
|---|--|
| 3A: Utility and Frontage Road Relocations | 3D: I-26/I-126 Improvements |
| 3B: Clearing and Grubbing | 3E: I-20/I-26 System to System Interchange |
| 3C: I-20 Widening | |

What's Next for Phase 3?

Procurement of Phase 3C is scheduled to start this spring and the procurement of Phase 3B will start in the fall. Utility coordination and project development will continue in the main interchange area.

Throughout the summer, SCDOT will refine details of the Project Re-phasing Plan, and this information will be announced as it becomes available. The momentum on the Carolina Crossroads Project will continue uninterrupted.



1-800-601-8715
info@carolinacrossroadsscdot.com

¿Hablas Español? Para recibir una copia en español de este boletín, envíe su solicitud por correo electrónico a info@carolinacrossroadsscdot.com o llame a la línea directa del proyecto al 1-800-601-8715.

SCAN ME
FOR INFO

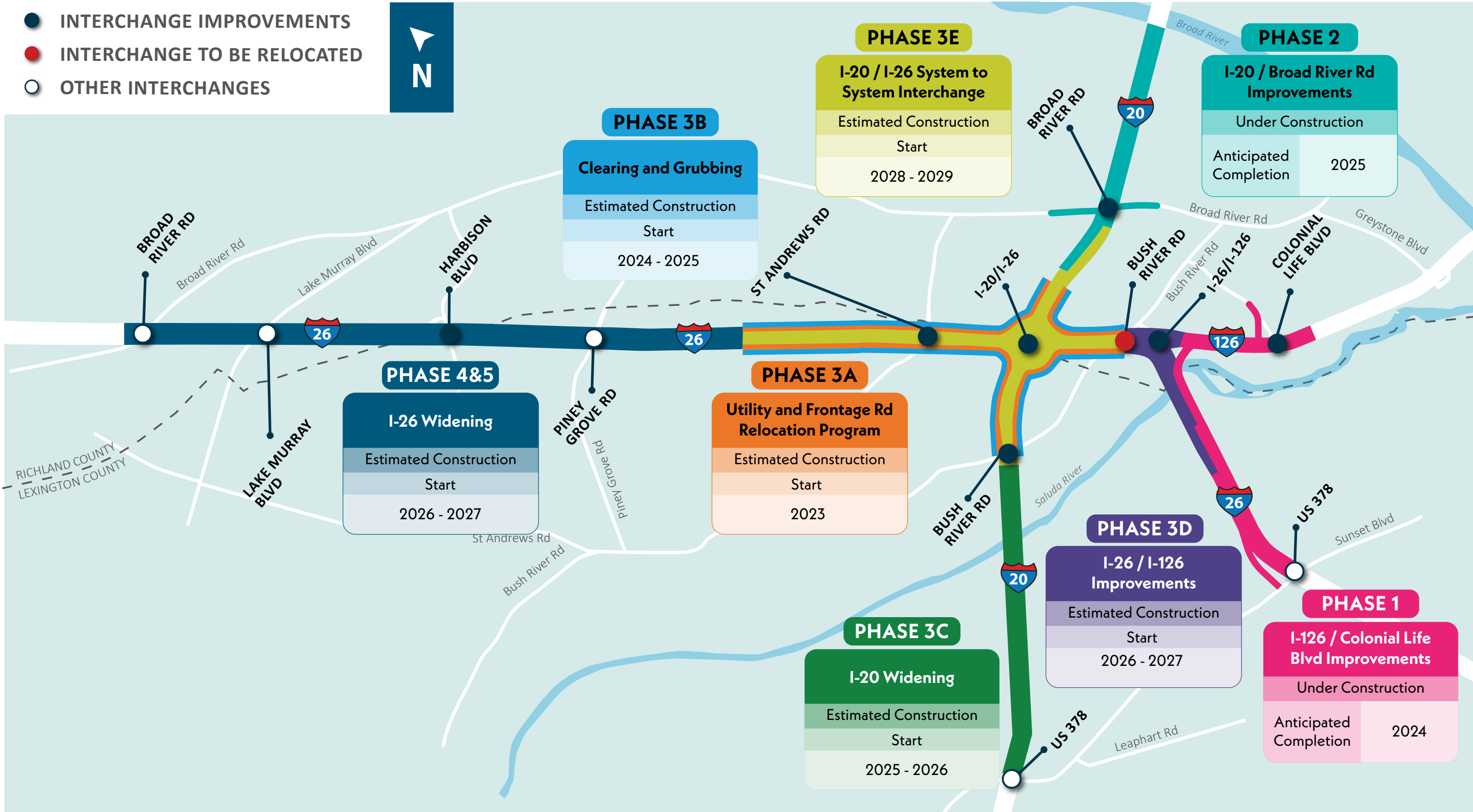
>>>>>



Phased Construction Map 2024



02/27/2024 - SUBJECT TO CHANGE



ECRWSS

**Local
Postal Customer**

Phase 1 - Colonial Life Boulevard at I-126 Interchange

A New Bridge is Almost Here



Progress of three new bridges being erected along I-126. Phase 1 is approximately 78 percent complete.

Exciting progress is being made within the Phase 1 project footprint, especially along Colonial Life Boulevard. What began as site clearing has now become the unmistakable makings of bridges. What may be most noticeable is the erection of steel girders above and alongside I-126 which will support the bridge deck above.

When complete, these bridges, shown to the left on the picture, will change the access location for travelers heading to I-26 eastbound and westbound. Currently, drivers can only access I-126 eastbound towards Downtown Columbia from Colonial Life Boulevard. With the construction of these new ramps, drivers will have full access to I-26 east towards Charleston and I-26 west towards Spartanburg from Colonial Life Boulevard. Once these bridges and ramps are fully operational, the existing ramps from Bush River Road will be permanently closed.

So, get ready to have a new and safer traveling experience.

Phase 2 - Broad River Road at I-20 Interchange

Another New Bridge is Coming Soon



A bird's eye view of the existing Broad River Road Bridge, as well as the new bridge currently under construction. The new bridge is expected to open mid-May.

Like Phase 1, Phase 2 has a milestone bridge opening on the way. The future southbound Broad River Road bridge, extending over I-20, is expected to open mid-May. The bridge deck and approach slabs have been poured, and the asphalt approaches will soon be complete. Once the bridge opens, traffic in both directions of Broad River Road will be redirected over the new bridge. The current bridge will eventually be demolished and rebuilt to make way for the future northbound Broad River Road traffic.

In addition to the upcoming bridge, construction is moving swiftly for a new ramp bridge that will take traffic from Broad River Road to I-20 westbound. In fact, pile driving is complete and retaining walls are nearly complete. Additionally, bridge beams have been lifted into place, which allows bridge deck construction to begin.

With the progress of the bridges and utility relocation, Phase 2 is approximately 50 percent complete.