

Phased Traffic Shift Scheduled as SCDOT Opens New Ramp at Colonial Life Boulevard

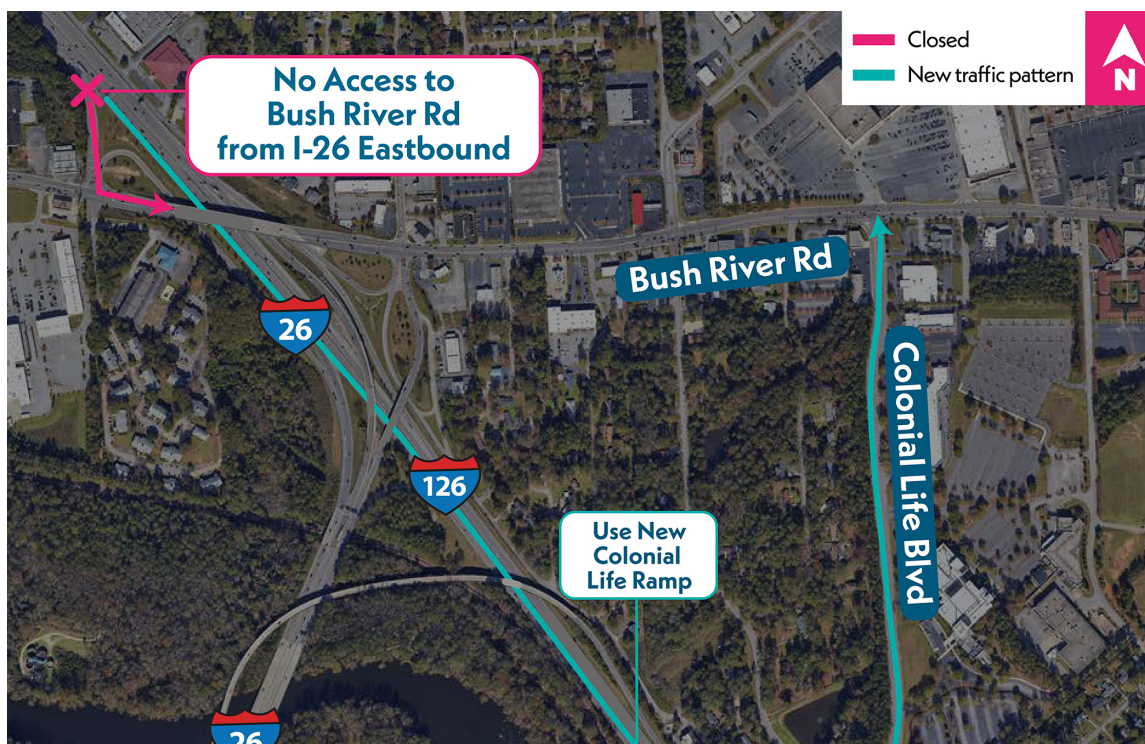
Thursday, September 12, 2024

Columbia, S.C. (September 12, 2024) - The South Carolina Department of Transportation has reached a major milestone in the Carolina Crossroads Project with the completion of the newly enhanced Colonial Life Boulevard Interchange. As a part of the Phase 1 project, SCDOT will implement a three-step plan to permanently close the I-26 interchange at Bush River Road and route drivers to Colonial Life Boulevard Interchange.

- **Step 1** will begin on Wednesday, September 18, 2024, at 9 p.m. when crews will permanently close the off-ramp from I-26 eastbound to Bush River Road. Access to Bush River Road will be provided at the new Colonial Life ramp on I-126 eastbound.
- **Step 2** will begin Sunday, September 22, 2024, at 9 p.m., with the closure of I-26 on-ramps at Bush River Road. Access to I-26 from Bush River Road will be provided at the new Colonial Life ramp onto I-126 westbound.
- **Step 3** is the planned closure of the off-ramp from I-26 westbound to Bush River Road. This step will take place early next year.

Step 1: New Traffic Pattern Information for the Upcoming Off-ramp I-26 Eastbound Closure to Bush River Road taking place on Wednesday, September 18, 2024

Access to Bush River Road from I-26 eastbound: Drivers traveling from I-26 eastbound to Bush River Road will use the Colonial Life Boulevard exit. The new exit is about half a mile past the current Bush River Road exit, accessible from I-126 eastbound.



STEP 1

New traffic pattern for off-ramp I-26
eastbound closure to Bush River Road



Step 2 – New Traffic Pattern Information for the Upcoming On-ramp Closures from Bush River Road taking place on Sunday, September 22, 2024

Access to I-26 eastbound toward Charleston from Bush River Road: Drivers traveling from Bush River Road to I-26 eastbound toward Charleston will drive to Colonial Life Boulevard and follow the signs at the I-126 interchange to connect to the I-26 flyover to Charleston.

Access to I-26 westbound toward Spartanburg from Bush River Road: Drivers traveling from Bush River Road to I-26 westbound toward Spartanburg will travel to the new Colonial Life Boulevard interchange at I-126 and follow the signs to access the ramp to I-26 west.



STEP 2

New traffic pattern for on-ramp
access to I-26

