

SCDOT to conduct nighttime closure and detour of new I-26 West exit ramp to I-126 East for construction

Columbia, S.C. (April 14, 2025) – The South Carolina Department of Transportation will conduct a nighttime closure of the I-26 Westbound exit ramp to I-126 Eastbound for construction beginning Monday, April 14, at 9 p.m. This work is part of the Carolina Crossroads Project.

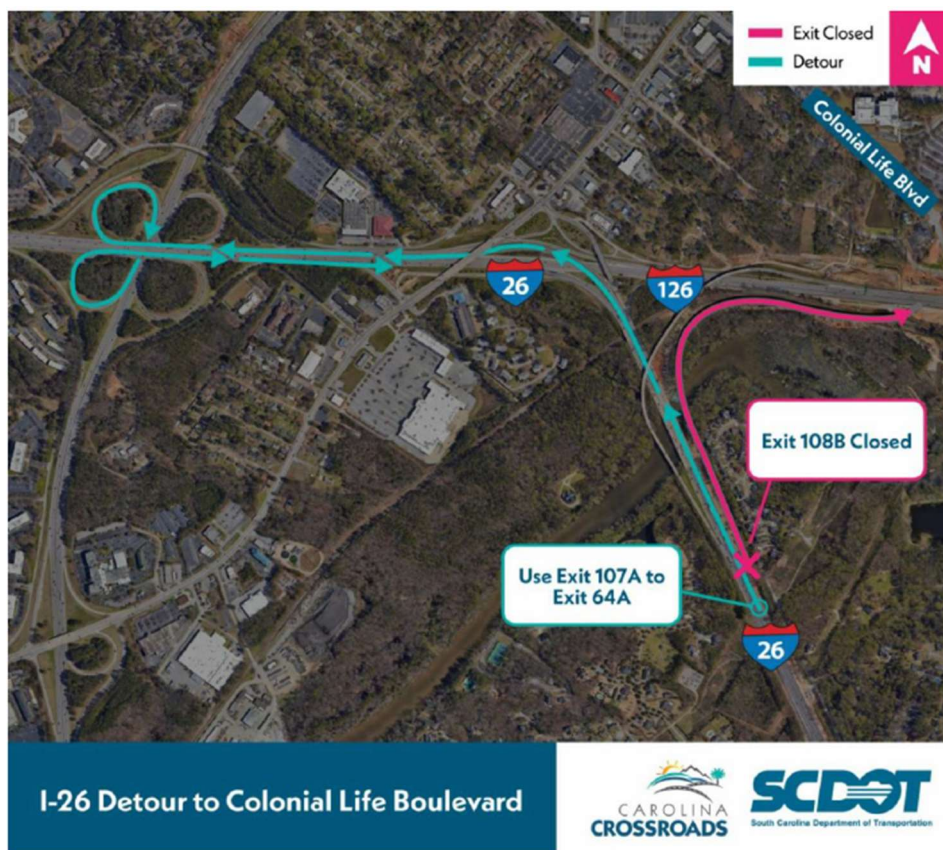
Detour Schedule:

- From Monday, April 14, at 9:00 p.m. until Tuesday, April 15, at 6:00 a.m.
- From Wednesday, April 16, at 9:00 p.m. until Thursday, April 17, at 6:00 a.m.

As part of the this closure, traffic will be detoured using the I-26 Westbound exit to I-20 Westbound (Exit 170A) and then to the I-26 Eastbound exit (Exit 64A). Detour signs will then direct drivers to I-126 Eastbound. A map of the detour can be found below.

SCDOT asks drivers to slow down and pay attention when driving through work zones.

Visit the [Carolina Crossroads project webpage](#) for more information and updates. The public may also contact the project hotline at 800-601-8715.



About SCDOT

The South Carolina Department of Transportation (SCDOT) is the state agency with oversight of South Carolina's network of highways and bridges, including responsibilities such as planning, design, construction, financing, and roadway safety. To ensure the nation's fourth-largest highway system is prepared to serve the needs of South Carolina's growing economy and population, SCDOT has developed a [Strategic 10-Year Plan](#) that addresses improvements to the state's highway and bridge systems. Learn more at [scdot.org](https://www.scdot.org).

-END-