

Program Updates



Roadway widening along I-20 westbound near the offramp at Broad River Road. Traffic will be shifted to this lane during construction of the Broad River Road bridge.

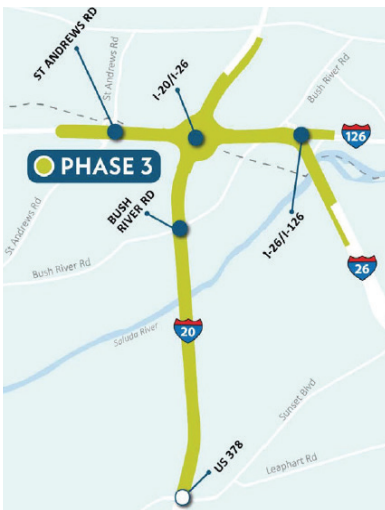
SCDOT is committed to safety throughout project construction

SCDOT prioritizes safety for everyone on our roads. This includes the safety of the traveling public and teams working on construction sites.

With active construction underway, drivers will notice trucks with flashing lights and workers in reflective vests throughout the project area. Additionally, reduced speed signage will be posted, and barriers will be erected to separate traffic from work areas.

Please exercise caution when driving through construction zones.

Phase 3 Procurement Update



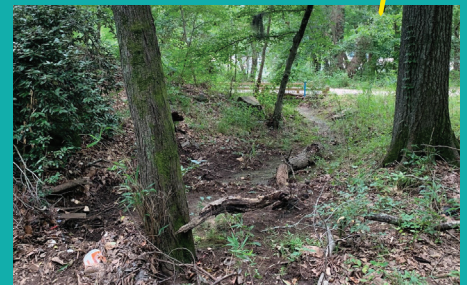
SCDOT has received Statements of Qualifications (SOQs), which highlight a company's experience and skills, from firms interested in serving as the lead team for the design and construction of Carolina Crossroads Phase 3. The list of submitters can be found on the project website at <https://www.scdot.org/business/carolina-crossroads-phase3.aspx>. SCDOT will announce the list of teams selected to advance through the procurement process on November 30, 2022.

Phase 3 includes the I-20/26 and I-26/126 system interchanges, St. Andrews Road at I-26 Interchange, and Bush River Road at I-20 Interchange.

Phase 3 is the most extensive phase of the Project.

Environmental Spotlight

Saluda River Canal



To protect what remains of the historic Saluda River Canal, access roads for bridge construction in Phase 1 were strategically located to avoid impacts.



PHASE 1 - Colonial Life Boulevard at I-126 Interchange



Left: Thirty-inch force main pipe fitting with a 45-degree bend. This is being installed in the area between eastbound I-126 and Saluda River. This is part of City of Columbia's sewer line relocation to allow construction of Phase 1. Right: Drilled shaft work is underway to lay the foundations for a new bridge at the Colonial Life Boulevard Interchange at I-126.

Phase 1 construction activity increases

By now, you may have noticed that major construction activity is underway. Tree clearing throughout the project area is continuing. Current clearing is taking place along Arrowwood Road and Morning Hill Drive to allow construction of new ramps at Colonial Life Boulevard Interchange at I-126.

Slightly less visible to motorists is the activity taking place adjacent to the Saluda River where a 30-inch pipe is being installed as part of City of Columbia's sewer line relocation. Bridge foundation work has also begun in areas adjacent to the river. Drilled shafts (the bridge foundation) range from 30 to 80 feet deep with diameters between 6 and 10 feet. The drilled shafts are excavated into the underlying bedrock with the assistance of multiple air compressors to operate the air hammer used to install the shafts for the new bridge. Once completed, the shafts will support the new interchange ramp bridges from I-26 to Colonial Life Boulevard and I-126.



What is a drilled shaft?

A deep, cylindrical, cast-in-place concrete foundation poured in and formed by a drilled excavation. Phase 1 drilled shafts will range from 6 to 10 feet in diameter and 30 to 80 feet deep.

Additional Phase 1 work underway includes utility coordination, ramp drainage, and boulder removal.



PHASE 2 - Broad River Road at I-20 Interchange



Phase 2 is under construction

Motorists driving along I-20 at Broad River Road may have seen the construction activity in that area.

Some of the most visible activity includes construction of a new collector-distributor ramp from I-20 westbound to westbound I-26, and tree clearing along I-20 eastbound in preparation of the Garner Lane relocation.



Construction of collector-distributor ramp to connect I-20 westbound with I-26 westbound.

Phase 2 public meeting held at Dutch Square Mall

SCDOT held a public meeting for Phase 2 construction on Tuesday, August 30, 2022. The meeting provided area residents and business owners an opportunity to meet the project team, ask questions about traffic management plans, and learn more about design plans for the redesigned interchange at Broad River Road and I-20.

Check out the Phase 2 virtual meeting

Did you miss the Phase 2 construction public meeting? Don't worry. The Phase 2 construction virtual meeting puts all of the details and information presented at the meeting right at your fingertips. Use the QR code to access the meeting and watch the visualization video for a virtual ride through the new interchange.



I-20 eastbound widening near Broad River Road.

