

## Program Updates

### Utility coordination and relocation are underway

As we are driving down the road moving from one place to another, we're not likely to give much thought to the utility infrastructure running above ground like power lines, or the ones below ground, like the fiber providing Internet access or water lines bringing water to our homes.

The Carolina Crossroads Project Team, however, has spent months identifying and studying the exact location of these service lines throughout the Carolina Crossroads project area; because inevitably, roadway improvement and utility infrastructure will cross paths.

With early construction underway, we're partnering with utility providers to have their infrastructure safely shifted or rerouted with minimum disruption to utility service and impacts on the community.

While the Carolina Crossroads Project Design Team worked to create a final design with minimal utility impact, other members of our project team dedicated their time to working hand-in-hand with the state's biggest service providers, like Segra, Dominion, the City of Columbia, and the City of West Columbia to develop a utility relocation strategy to efficiently resolve conflicts while maintaining an aggressive construction schedule.

By having a dedicated utility coordination team to actively lead this critical phase of the construction process, we're able to streamline several utility relocations and get them well underway in order to begin major roadway construction activities.



Rock hammer breaking rock for installation of the 30" Force Main Sewer between I-126 east and the Saluda River

### Words to know

During construction of a project like Carolina Crossroads, you may come across words that you don't use every day. This may particularly be true when it comes to utilities. So, here are a few of the more frequently used words and their definitions.



#### Right of Way

A general term referring to land or property acquired for transportation purposes



#### Aerial Encroachment

An above-ground area where a utility structure, like powerline, or sign extends over the right of way line



#### Easement

The right to cross or use someone else's land for a specific purpose



#### Dry Utilities

Utilities that include cable, electric, telephone, natural gas, television, and fiber optics



#### Wet Utilities

These utilities include any items that have to do with water, such as sewer, and water systems



# Construction Updates

## Phase 1 Updates



Relocating powerlines near I-26 west on McSwain Drive

Phase 1 utility work includes the relocation of water and sewer lines in partnership with the City of Columbia and the City of West Columbia.

One of the biggest tasks is relocating the City of Columbia Pump Station. The Pump Station, located on Lawand Drive near Morninghill Drive, along with the associated gravity systems that feed it, will be relocated to allow for a new on-ramp from Colonial Life Boulevard to I-126 west.

Additional Phase 1 utility work includes relocating telephone lines, as well as coordinating with the Department of Administration (DOA) to move fiber optic lines.

Drivers traveling along I-126 east may see large equipment needed to remove rock and dig trenches to make way for the City of Columbia's 30" force main sewer line. Along I-26 east, drivers may see drilling to relocate fiber, equipment clearing access to areas for utility relocation, and bucket trucks relocating power lines.



Fiber Optic Underground Horizontal Drilling Machine for the relocation of fiber optic lines I-26 east



Clearing along I-26 east providing new right of way next exit ramp to US 378

## Phase 2 Updates

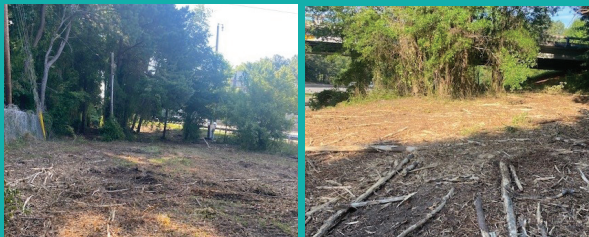
Phase 2 utility work includes relocating 12-inch and 24-inch waterlines within the project footprint for the City of Columbia. The project team is also actively coordinating and planning with Dominion Energy for the relocation of transmission lines across I-20 near the Broad River Road bridge.

Several utility duct banks will be built to provide utility consolidation throughout the project area as a part of utility relocation efforts. Drivers traveling down I-20 west may see shoulder closures associated with potholing activity being performed to identify existing utilities. The information collected from potholing will be used for the duct bank consolidation.

Several areas are also being cleared to prepare for construction once final permits are obtained.



Phase 2 Potholing utility work



Clearing within Phase 2 area awaiting construction

## Don't miss the Phase 2 Construction Public Information Meeting

The meeting will be held Tuesday, August 30, 2022 from 5:00 - 7:00 pm at Dutch Square Center, 421 Bush River Rd, Columbia, SC 29210.



Phase 2 of the Carolina Crossroads project focuses on the Broad River Road interchange at I-20 and includes a new ramp connecting I-20 west to I-26 west.

