

Program Updates

Committed to environmental stewardship

On the heels of Earth Day which occurred on Friday, April 22, we wanted to take some time to highlight the ways your Carolina Crossroads Project Team has been thoughtful and intentional about our approach to the environmental aspects of our work.

From inception, the Carolina Crossroads Project established formal mitigation goals for stream restoration and preservation, as well as wetland preservation. These efforts along with wildlife habitat and management opportunities offer a public-use benefit that we hope will make outdoor enthusiasts rejoice!

SCDOT's mitigation goals for CCR included 18,848 feet of stream restoration and the preservation of 8.4 acres of wetlands adjacent to the Belfast Wildlife Management Area (WMA) in Newberry County. Plans are set for this habitat to be added to the Belfast WMA. The South Carolina Department of Natural Resources (SCDNR) will serve as stewards of the property.

The mitigation efforts mentioned above, coupled with those deducted from our Black River Mitigation Bank, means that we have met or exceeded requirements set by the U.S. Army Corps of Engineers' Department of Army's Individual Permit. These innovative solutions were developed as our Permittee-Responsible Mitigation because the impacts to the wetlands and streams were otherwise unavoidable. Stay tuned for more details about this project as we carry on with our work for you.



Tributary 39. Photo courtesy of Widlands Engineering, Inc.



Designing for minimum impact



Tributary 39. Photo courtesy of Widlands Engineering, Inc.

After recent announcements that construction activity for Phase 1 and Phase 2 is getting underway, many of you may be driving through the corridor expecting more activity. Rest assured that active construction will become more evident in the coming months, but for now contractor teams are busy finalizing designs. As final design plans are submitted for review, each is thoughtfully developed with environmental impact mitigation in mind, paying close attention to the protection of existing watersheds and tributaries.

One specific example is with the level of care and consideration the contractor team has taken to ensure the protection and preservation of the historic Saluda River Canal.

For those who may not be familiar with the canal, it was constructed in 1824 as a way of allowing river boats to avoid the falls and rapids upstream of where the Saluda River and Broad River converge to form the Congaree River. It was recognized as an engineering feat of its time and is listed on the National Register of Properties in South Carolina.

To protect the remnants of the canal, access roads for bridge construction in Phase 1 were located at points that avoid impacts to the canal. Additionally, floating barges will be utilized in the Saluda River to accommodate bridge construction. These will be fully removed upon completion, leaving no lasting impact.

Early Construction

Major construction activity for Phase 1 and Phase 2 is scheduled to begin in summer and fall 2022. However, you may have already seen some of the following early construction activity.

Logging Operations



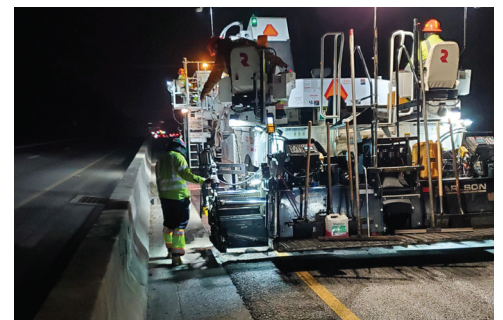
Tree clearing and logging is taking place in Phase 1 to prepare for bridge construction.

Soil Borings



Soil boring samples provide data on the most appropriate, efficient, and sustainable foundation and roadbed design.

Mill and Fill



Mill and fill resurfacing on I-26 in Phase 1.

