



The Carolina Crossroads Project Team Welcomes You



Brian Klauk
SCDOT
Program Manager



Heather Robbins
SCDOT
Environmental Manager



Patrick Tyndall
FHWA
Environmental Oversight



David Kinard
Consultant
Program Manager

3
INTERSTATES

+

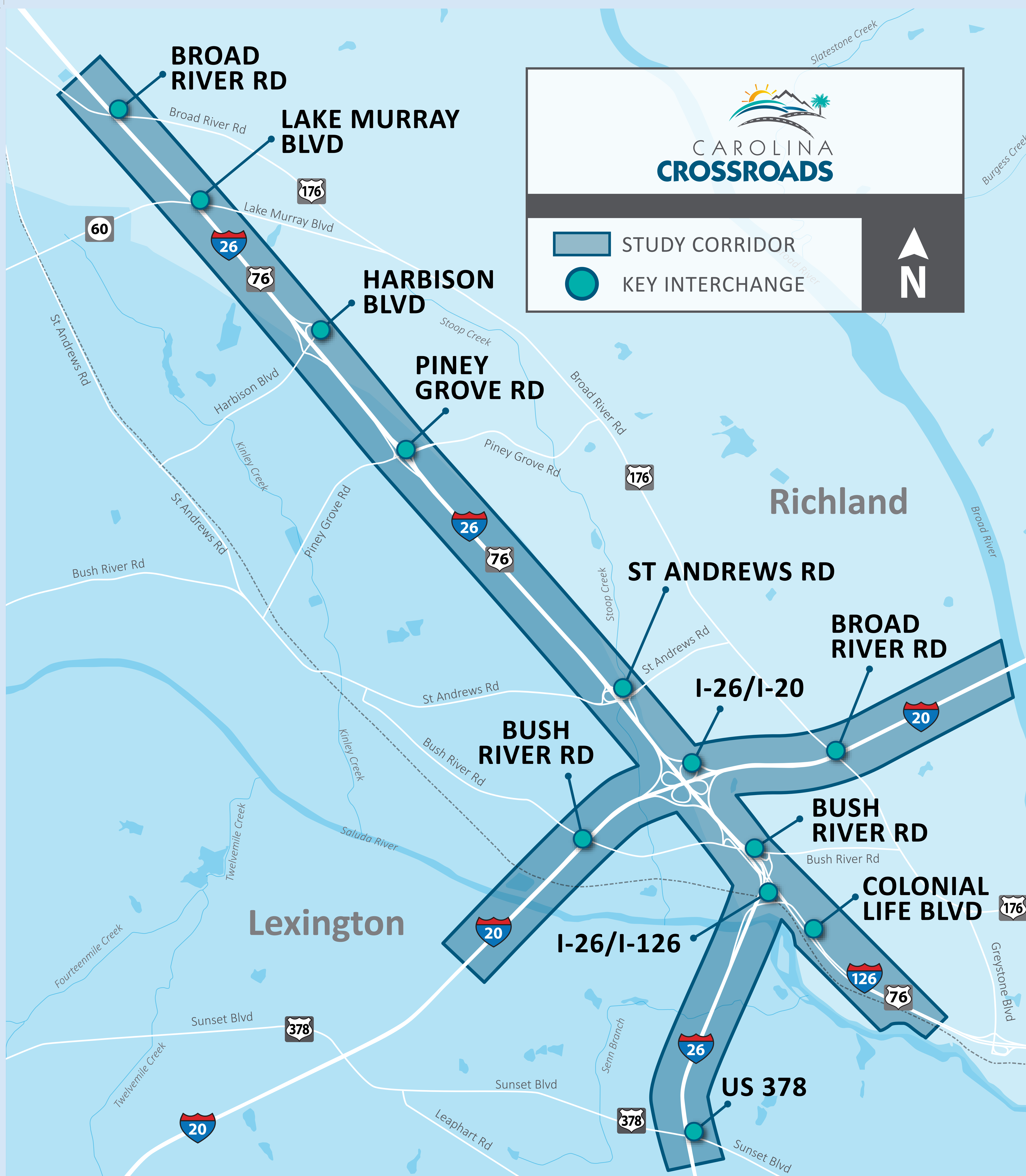
12
KEY INTERCHANGES

=



We're here to:

- Introduce you to the Carolina Crossroads I-20/26/126 Corridor Project
- Provide information on the process and schedule for the project
- Explain how you can stay informed and get involved



Carolina Crossroads is a State Priority

- Developed initially in the 1950s and no longer meets current traffic demands
- Major hub for Midlands' commuters, travelers and commerce

The I-20, I-26 and I-126 interstate corridor is the crossroads of the state's economy.



Corridor Facts



19 Bridges



12 Interchanges



14 Interstate Miles



166 Roadway Lane Miles

Project Goals



Reduced Congestion



Improved Traffic Operations



Increased Safety



Increased Capacity

Additional Benefits



Improved Freight Mobility



Job Creation



Reduced Emissions

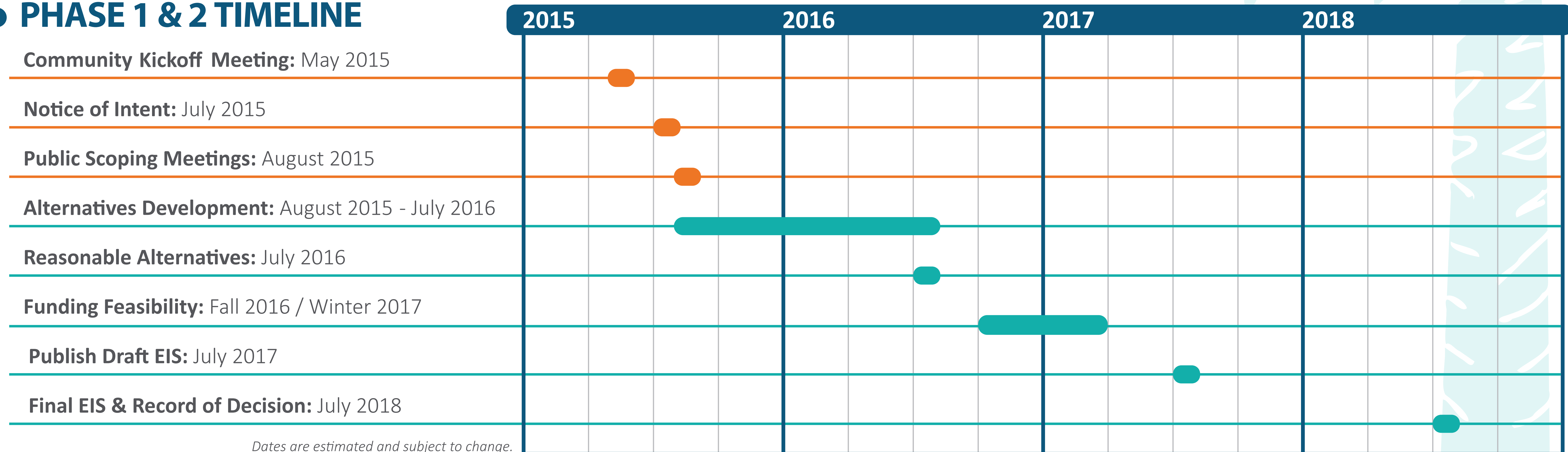


Other Benefits

Project Phasing



PHASE 1 & 2 TIMELINE





National Environmental Policy Act

- An Environmental Impact Statement (EIS) is required by NEPA and is administered by FHWA
- Provides for informed decision-making
- Includes partners in the process
- Considers a wide variety of factors



Environmental Impact Statement (EIS)

EIS PROCESS

- Gathers information on existing conditions:
 - » Natural Resources
 - » Human Environment
 - » Physical Resources
- Considers a range of reasonable alternatives.
- Analyzes the potential impacts on existing conditions resulting from the alternatives.
- Complies with other applicable environmental laws and executive orders.

ENVIRONMENTAL STUDIES



Threatened/endangered species



Historic and cultural sites



Wetlands and streams



Social and economic resources



Water quality



Noise environs



Air quality

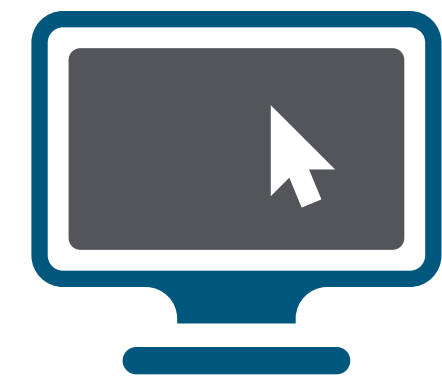


Community impacts



Get Involved & Stay Informed

There are a number of ways to be involved with the project:



Visit the project website:

www.SCDOTCarolinaCrossroads.com



Email us:

info@CarolinaCrossroadsSCDOT.com



Call us:

1-800-601-8715



Follow us:

