

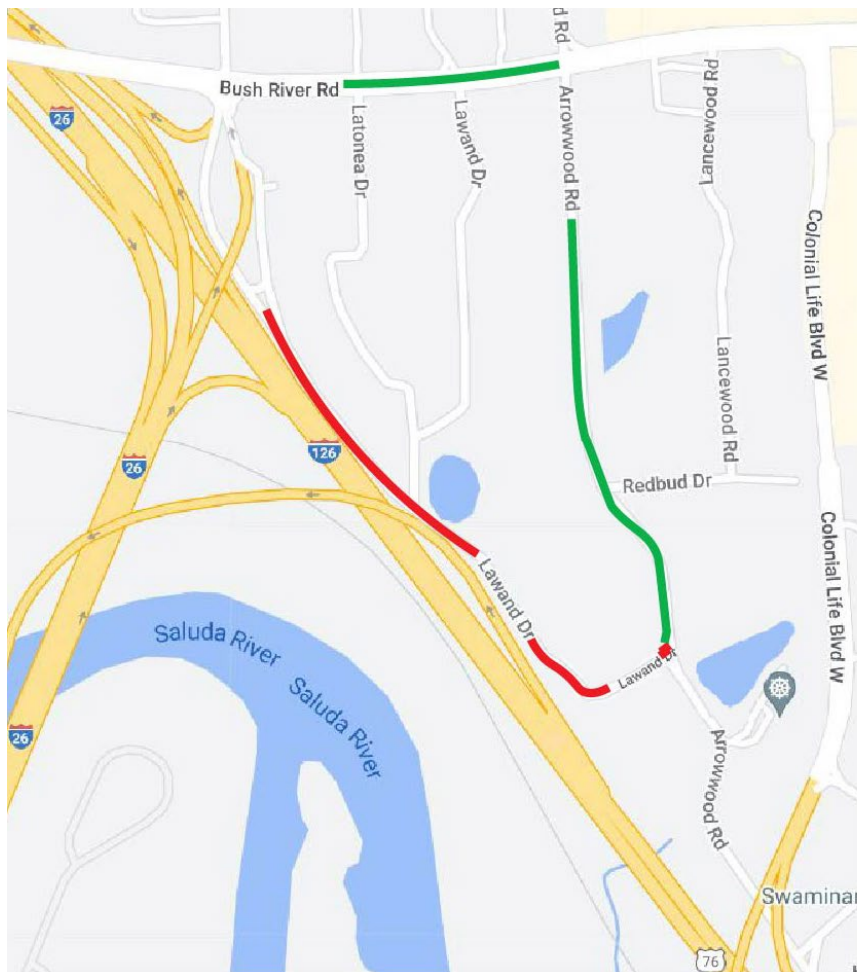
# Closure and Detour of Lawand Drive and Morninghill Drive in Richland County

Thursday, April 6, 2023

**Columbia, S.C.** (April 6, 2023) - A section of Lawand Drive and Morninghill Drive, from the intersection of Arrowwood Road and Lawand Drive to the intersection of Morninghill Drive and Frontage Road, will be closed starting Monday, April 10, 2023, at 7 a.m. for construction work. SCDOT expects the roads to reopen by 7 a.m. on Monday, August 7, 2023. Drivers should follow the signed detour route. Local traffic will have road access during the closure.

## Closure and Detour Information

- **When:** April 10 at 7 a.m. through Monday, August 7, 2023 at 7 a.m.
- **Where:** Lawand Drive and Morninghill Drive, from the intersection of Arrowwood Road and Lawand Drive to the intersection of Morninghill Drive and Frontage Road



## Closure and Detour

April 10 — August 7, 2023

Lawand Drive  
and Morninghill Drive

- Road Closure
- Detour Route



This closure is for work that is part of the Carolina Crossroads Phase 1 project in Richland and Lexington counties. During this closure, SCDOT contractors and project partners will perform utility work, improvements to the exit ramp to US 378 from I-26 eastbound, and interstate widening in Lexington County. A full-access interchange, being built at Colonial Life Boulevard at I-126 in Richland County, will replace the exits that access I-26 from Bush River Road. For more information, visit <https://www.scdotcarolinacrossroads.com/> or call the Project Hotline at 1-800-601-8715.

[View Online](#)